

TAKTIS

Analogue Addressable Fire Control Panel Basic Operators Manual

This document describes functions of the Kentec Taktis Fire Control Panel. User controls can be modified through the system configuration software, so if the operation of the system is not consistent with that described in this manual then please check with your installer / service provider.

Contents

Section 1 Indications & Controls

| | |
|-----------------------------|---|
| Controlling the system..... | 3 |
| Left Indicators..... | 3 |
| Right Indicators..... | 4 |
| User Access Levels..... | 4 |
| No User Group..... | 4 |
| Access Level 2..... | 4 |
| Controls..... | 5 |

Section 2 Controlling a Fire Condition

| | |
|-----------------------------------|---|
| Access Level 2 / Key Level 2..... | 6 |
|-----------------------------------|---|

Section 3 Navigating the User Controls

| | |
|--|----|
| System Information..... | 8 |
| Disablements (Re-Enablements)..... | 8 |
| Disable / Re-Enable Zones..... | 9 |
| Disable / Re-Enable Devices..... | 9 |
| Disable / Re-Enable All Sounders..... | 10 |
| Disable / Re-Enable Panel Outputs..... | 10 |
| Disable / Re-Enable All Outputs..... | 11 |
| Disable / Re-Enable All Plant Outputs..... | 11 |
| Set Date and Time..... | 12 |
| View Event Log..... | 12 |
| Panel Tests..... | 13 |
| GUI Settings..... | 13 |

Section 4 Emergency Contact

| | |
|-------------------|----|
| Contact Form..... | 14 |
|-------------------|----|

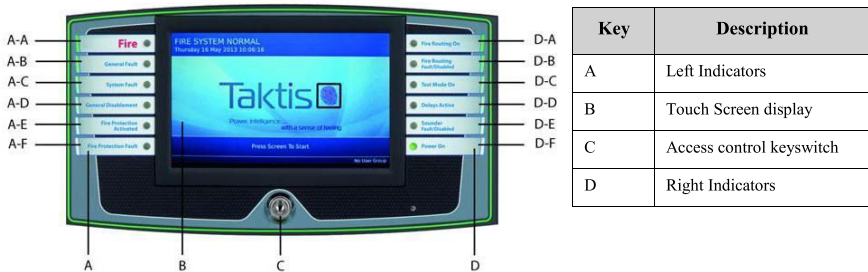
Section 1

Indications & Controls

Controlling the system

The system has a two indicators panels either side of the touch screen display to advise the user of the status of the system, a touch screen display to give the user detailed information and Zone indicators (if fitted) below the main display. The touch screen display provides the user with control buttons based on the type of events that are active and access level of the user.

When the Fire System is the “Normal condition” the touch screen display is visible and shows the quiescent condition with no controls. Quiescent mode is present when the fire control panel is *not* reporting fire alarms or fault conditions. When an event occurs the panel will operate its internal buzzer and change the display and illuminate the appropriate indicator to show the change of condition.



Left Indicators

| Key | Indicator | Colour | Description |
|-----|---------------------------|--------|--|
| A-A | Fire | Red | This red indicator will flash whenever the panel is in a fire condition. If the sounders are silenced, then the indicator will change state from flashing to constant. |
| A-B | General Fault | Yellow | This yellow indicator will flash when the system is not operating as expected. The system maintenance company should be contacted as soon as possible to identify the problem. |
| A-C | System Fault | Yellow | This yellow indicator will flash when there is a serious fault with the panel microprocessor or memory components. The system maintenance company should be contacted as soon as possible to identify the problem. |
| A-D | General Disablement | Yellow | This yellow indicator will illuminate (constant) when a part of the system has been disabled. Please note that the system may not operate as expected when disablements are active on the system. |
| A-E | Fire Protection Activated | Red | This red indicator will illuminate (constant) to advise the user that the panel is signalling to optional Fire Control or Fire Fighting (Extinguishing) Equipment. |
| A-F | Fire Protection Fault | Yellow | This yellow indicator will illuminate (constant) to advise the user that the panel is having trouble communicating to optional Fire Control or Fire Fighting (Extinguishing) Equipment. |

Section 1

Indications & Controls

Right Indicators

| Key | Indicator | Colour | Description |
|-----|-------------------------------|--------|---|
| D-A | Fire Routing On | Red | This red indicator will illuminate (constant) when a Fire condition has been signaled to others (Configuration option). |
| D-B | Fire Routing Fault / Disabled | Yellow | This yellow indicator will flash when there is a fault on the monitored circuit to the Fire Routing equipment. The system maintenance company should be contacted as soon as possible to identify the problem. The indicator will be illuminated (constant) when the output has been manually disabled. |
| D-C | Test Mode On | Yellow | This yellow indicator will illuminate when one or more zones have been manually put in test mode. The system should not be left with any zones in test mode. |
| D-D | Delays Active | Yellow | This yellow indicator will illuminate (constant) when outputs have been configured with delays and the delays are switched on within the User Controls menu. |
| D-E | Sounder Fault / Disabled | Yellow | This yellow indicator flashes if it has a problem with any sounder and the sounders may not operate in an emergency situation, the system maintenance company should be contacted as soon as possible to identify the problem. The indicator will be illuminated (constant) when any sounder device has been manually disabled by the user. |
| D-F | Power On | Green | This green indicator should always be illuminated (constant) as it indicates that the panel has power. If the indicator is off, it means that mains power and the internal batteries have failed. The system maintenance company should be contacted immediately to identify the problem. |

User Access Levels

User access levels of the Taktis fire control panel are displayed in the bottom right corner of the touch screen display. User access levels are available through the following methods:

No User Group / Access Level 2 (log in code through touch screen display) and **Key Level 2** (front-panel key-switch)

No User Group

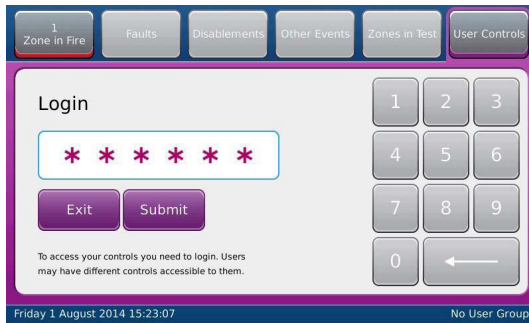
The No User Group does not require a log in code or operation of the front panel keyswitch, it is available to all users of the panel. The functions are restricted when operating the fire control panel in the No User Group, this mode allows users to view system information and to perform simple tests.

Access Level 2

Log-in through the touch screen display provides an "Access Level 2" access to the panel, this allows the user to control the panel for the following functionality. For the user to access this they must have been allocated a password. **Default password "222222". The Password can be changed from the default and recorded here.**



Section 1 Indications & Controls



Once the user has logged in through the touch screen display, the text in the bottom right of the display changes from “**No User Group**” to “**Access Level 2**”

Key Level 2

Level 2 can also be gained through the Front Panel Keyswitch. To access level 2 menu's, insert the key into the keyslot (C) below the touch screen display in the centre of the bezel, turn the key 45 degrees clockwise to enable the controls.

Once the Key is turned, the text in the bottom right of the display changes from “**No User Group**” to “**Key Level 2**”.

Controls

If the user has logged in using a password or used the key switch, it generally provides the user with the following menu options: *(Please Note: The Menu available from “level 2” can be configured, hence different menu options may be available).*

Silence / Re-Sound / Buzzer Silence / Reset and the system menus below;

System Information / Disablements / Test Zones / Set Time & Date / View Event Log / View Devices / Panel tests / GUI Settings.

Section 2 Controlling a Fire Condition Access Level 2 / Key Level 2



The fire control panel is operating in access level 2 when either Access level 2 or Key Level 2 is visible on the bottom-right of the touch screen display.

1) Once the fire has been investigated, the sounders can be silenced: Press **“Silence Alarms”** button as shown below to silence the sounders that have been activated. Once the button has been pressed its status changes to **“Re-Sound Alarms”** to allow the user to re-evacuate the building if required.

Note: The **“Buzzer Silence”** button becomes active again if the **“Re-Sound Alarms”** is operated.



2) The cause of the fire condition can be determined through the touch screen display, it will show the device(s) that triggered the system into alarm. Note: Smoke detectors will not reset until they are clear of smoke, heat detectors will not reset until the temperature has reduced below the trigger threshold. Call-points can be reset by glass replacement, removal of the test key (if it was a test) or resetting the non-frangible element.

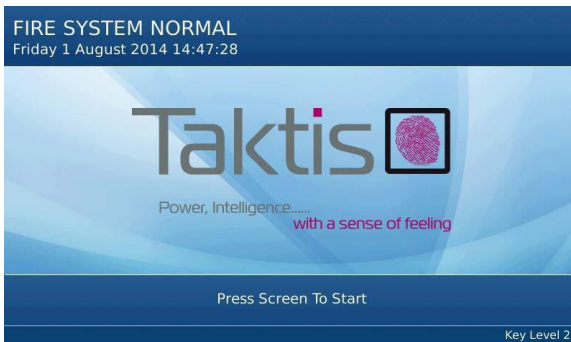
*If it is not clear which device has caused the fire condition then the **“More Details”** button can be pressed on the touch screen display to gain further information.*

3) Press the **Reset System** button on the touch screen display

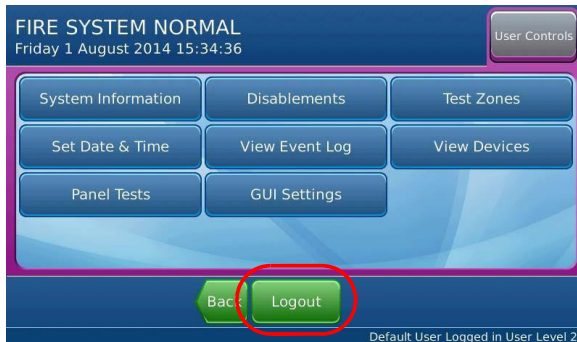
Section 2 Controlling a Fire Condition



4) After the "Reset" has completed the system will return the user back to the "Fire System Normal" screen.



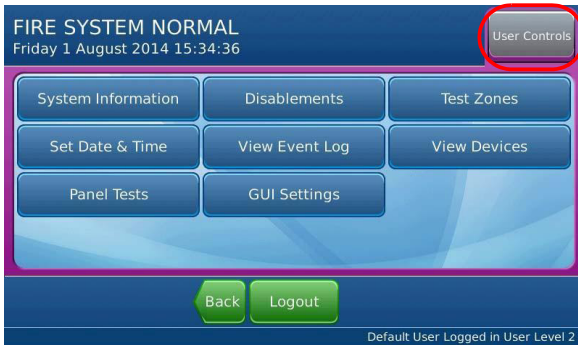
5) The system should not be left logged-in, press the touch screen display to get back into the system and then press the "Logout" button or if the keyswitch was used turn the enable access key to the left to exit Key Level 2 and remove the key.



Section 3

Navigating the User Controls

To access User Controls press the press **“User Controls”** button on the top right of the touch screen display. this will show a range of buttons that allow the user to perform a number of functions. The buttons shown will depend upon the configuration.



System Information

This provides the user the software versions of the panel.

Disabements (Re-Enablements)

WARNING - DISABLEMENTS SHOULD BE RESTORED AS SOON AS POSSIBLE TO ENSURE THE FIRE SYSTEM PROTECTS THE OCCUPANTS AND THE BUILDING.

1) To either Disable or Re-enable on the panel press **“Disabements”** button from the User Controls screen.

Within this option it allows Zones / Devices / Sounders and Outputs to be Disabled or Re-Enabled.



2) Select the appropriate button on the touch screen display, each disablement option is described below;

Section 3

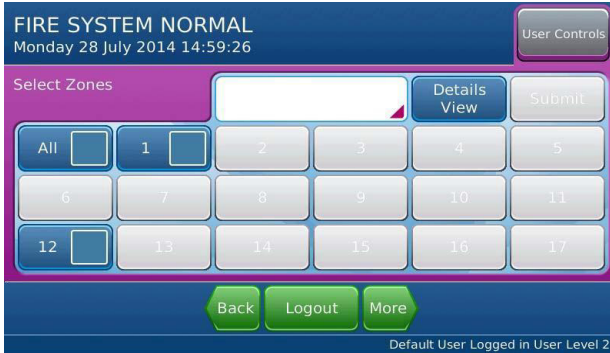
Navigating the User Controls

Disable / Re-Enable Zones

Perform this operation to disable / enable zones on the Taktis Fire Control Panel.

To disable zones on the fire control panel;

1) Press **“Disable Zones”** button on the Fire system Normalwindow.



2) Press the empty box adjacent to the Disabled Zone(s) on the Fire System Normal window.

3) Press **“Details View”** button on the Fire System Normal window.

4) Press the **“Submit”** button.

5) Press **“No”** and this will then give the option to change the field to **“Yes”** in the Include Call Points box if required.

6) Press **“Submit”** button.

7) Press the **“Disablement”** button in the top navigation.

8) Press **“More Details”** button.

9) Press the **“Disable”** button on the top navigation bar.

10) Press **“Enable”** or **“Enable All”** button to re-enable the disabled Zone(s).

11) Press the Taktis window.

12) Press **“Logout”** button.

The **No User Group** authorisation of the Taktis window is displayed:

Disable / Re-Enable Devices

Perform this operation to disable devices on the Taktis Fire Control Panel.

To disable devices on the fire control panel;

1) Press **“Disable Devices”** button on the Fire System Normal window.

2) Devices can be disabled either by Loop or Zone.

To Disable by Loop.

Section 3

Navigating the User Controls



- 3) Press **“Loop X”** button. (where X is the required loop number 1-8).
- 4) The number of options displayed will depend upon the different device types fitted to the loop, the system will provide options to select by device types fitted or by the **“All”** option which selects all the devices fitted to the loop. To select any of the options press inside the checkbox to select (multiple selections are allowed) and a green tick will be displayed when successfully selected.
- 5) Once a green tick is displayed, the **“Show”** button will become active, press the **“Show”** button and this will list all the devices selected on the selected Loop that can be disabled.
- 6) Press the **“More Details”** button on the device that you wish to disable.
- 7) Press **“Disable”** button to disable the selected device.
- 8) Press the **“Disablement”** button on the top navigation bar. (Note this will show all devices that have been disabled).
- 9) Press **“More Details”** button.
- 10) Press the **“Disable”** button on the top navigation bar.
- 11) Press **“Enable”** button to re-enable the required devices that has been previously disabled.
- 12) Press the Taktis window.

Disable / Re-Enable All Sounders

Perform this operation to disable / enable all sounders on the Taktis Fire Control Panel.

All Sounders on the fire control panel are disabled (enabled) as a complete group.

Disable / Re-Enable Panel Outputs

Perform this operation to disable panel outputs on the Taktis Fire Control Panel.

Outputs on the fire control panel can be disabled (enabled) individually. So if an individual Sounder Circuit or any other Panel Output can be selected individually and disabled

Section 3

Navigating the User Controls

Disable / Re-Enable All Outputs

Perform this operation to disable / enable all outputs on the Taktis Fire Control Panel.

All Outputs on the fire control panel can be disabled (enabled) as a complete group.

Disable / Re-Enable All Plant Outputs

Perform this operation to disable / enable all plant outputs on the Taktis Fire Control Panel.

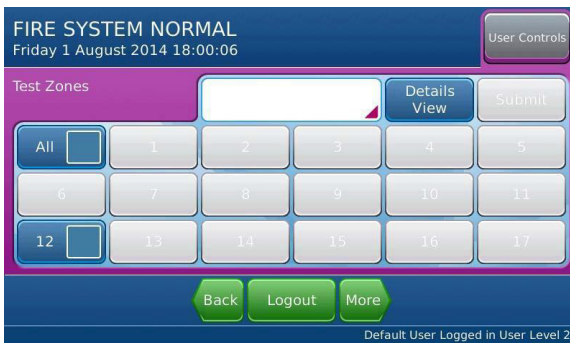
All Plant Outputs on the fire control panel can be disabled (enabled) as a complete group.

Test Zones

WARNING - ZONES IN TEST SHOULD BE RESTORED AS SOON AS POSSIBLE TO ENSURE THE FIRE SYSTEM PROTECTS THE OCCUPANTS AND THE BUILDING.

Zone testing allows devices to be put in to alarm condition and automatically resets the Taktis Fire Control Panel to confirm activation. The Test Zones feature allows operators to conduct testing without manually resetting the fire control panel between activations.

1) Press **“Test Zones”** button.



2) Press inside the checkbox(s) required to either select **“All”** zones or individually select the required zone(s) to test (multiple selections are allowed) and a green tick shows when successfully selected a zone to test.

3) Once all the required zones have been selected press **“Details View”** button.

4) Once it has been verified the required zones have been selected press **“Submit”** button.

5) Zones can be tested with or without the system sounders being active, To change the setting Press **“Box showing the current option** (Yes/NO) and this will then give the option to change the field to the opposite setting if required to change.

6) Press **“Submit”** button to begin the test of the selected zone(s).

Section 3

Navigating the User Controls

The Test Mode ON LED on the fascia of the fire control panel will be continuously illuminated whilst the system is in Zones Test.

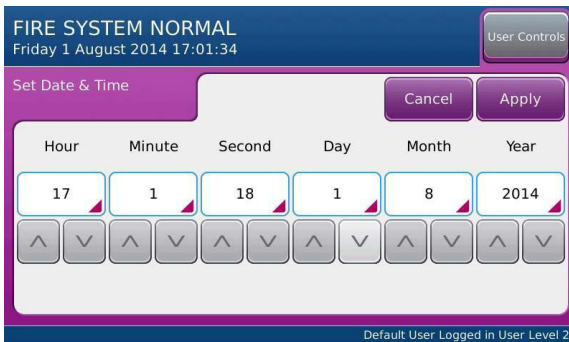
- 7) Press the **"X Zones in Test"** button on the top navigation bar (where X is the number of zones in test).
- 8) Test all required zones.
- 9) Press **"More Details"** button to see additional information.
- 10) Press the **"X Zones in Test"** button on the top navigation bar or **"Back"** button to return to the previous window.
- 11) Press **"Restore All"** button to cancel the test of all Zone(s) in test or press the **"Enable"** button next to each zone to take that zone out of test.
- 12) Press the Taktis window.
- 13) Press **"Logout"** button.

The No User Group authorisation of the Taktis window is displayed:

Set Date and Time

- 1) Press **"Set Date & Time"** button on the Fire System Normal window:

The Set Date & Time window is displayed:



- 2) Adjust the Time and Date accordingly and then press **"Apply"** button to set the new parameters.

View Event Log

Perform this operation to view the Event Log of the system.

The user can find the device they wish to view by Loop (1-8) or Zone, then by device type (multiple devices types can be selected) or all the devices on the loop or Zone. The panel will then provide a list of devices based upon the selected criteria, for each device the status can be shown using the "More Details" button or disabled / re-enabled as required.

Section 3

Navigating the User Controls

View Devices

Perform this operation to view the status of any loop device.

The user can find the device they wish to view by Loop (1-8) or Zone, then by device type (multiple device types can be selected) or all the devices on the loop or Zone. The panel will then provide a list of devices based upon the selected criteria, for each device the status can be shown using the "More Details" button or disabled / re-enabled as required.

Panel Tests

Perform this operation to test the user interface.

The panel LED's and internal buzzer can be tested to ensure that they all illuminate and sound.

The LCD screen can be tested to ensure that it displays characters correctly.

GUI Settings

Perform this operation to adjust the screen brightness and the buzzer operation

The screen brightness can either be selected manually or set automatically where it adjusts to the ambient light.

The internal buzzer can be selected to sound on each keypress or be silent during keypresses

Section 4

Notifying the Emergency Contact Contact Form

Contact the company or individual responsible for providing assistance in the event of an emergency.

| | |
|----------------------------|--|
| Name | |
| Company | |
| Primary Telephone | |
| Secondary Telephone | |
| Mobile Phone | |
| Address | |

Sydney

Block Y, Unit 1, 391 Park Road, REGENTS PARK NSW 2143
Mail: PO Box 508 GYMEA NSW 2227
Phone: 1300 INCITE (1300 462 483) | 02 9644 7144
Fax: 02 9644 7255
Email: sales@incitefire.com.au
Technical support: support@incitefire.com.au

Melbourne

Address: Unit 120, 45 Gilby Road, MT WAVERLEY VIC 3149
Phone: 03 9544 2211
Fax: 03 9544 2212
Email: salesvic@incitefire.com.au

Brisbane

Address: 25 Jeays Street, BOWEN HILLS QLD 4006
Phone: 07 3252 5366
Fax: 07 3252 4099
Email: salesqld@incitefire.com.au

Perth

Address: Unit 2, 48 Irvine Drive, MALAGA WA 6090
Phone: 08 9349 2972
Email: saleswa@incitefire.com.au